



## How about your retail cash awareness?



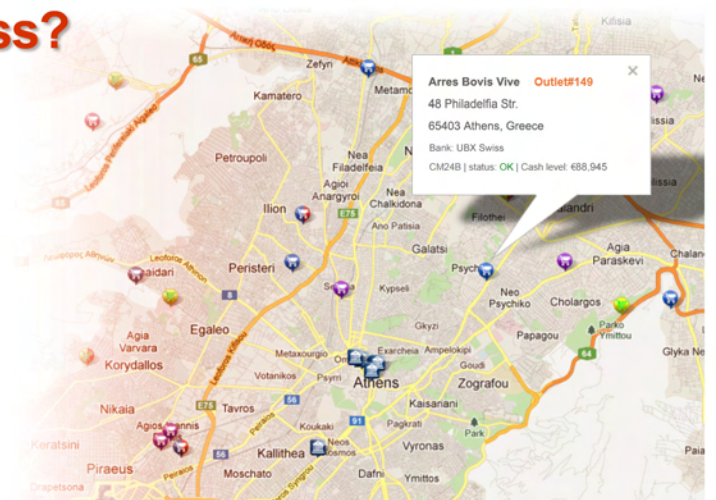
**Focus on specific network entities**  
Isolate banks, or retail chains, or single retail outlets. Select geographical area to focus into.



**Discover cash inventory levels**  
Quick view on the map with the inventory level of each collection point. Drill-down info.



**View collection points status**  
See on the map all your collection points network with variable status indicators.



## Features

- Overview map of your smart safes network
- Single or multiple territories (cities, countries)
- Zoom in and out to focus on area of interest
- Color and icon coded smart safe locations, based on status and cash criteria
- Click to drill down to detailed information
- Isolation of selected locations based on multiple criteria (status, cash level, ownership)

## Benefits

- Cash Network Monitoring Center deployment
- Large scale wall mounted screens facilitate incident management team coordination
- Quick issues detection and problem identification
- Raise awareness level of cash smart safes network changing status on peak hours
- Decisive contribution to SLA's compliance

## Supervisory Control System for your Cash Network

GeoCash is an interactive supervisory control system, where authorized users may interrogate the installed Cash Smart Safe device nodes, which are superimposed over a Google Maps® backdrop.

GeoCash is offered on a SaaS (Software as a Service) principle, where associated data are centrally hosted on the "Cash Management Network" (CMN) cloud. Users are typically using a thin client via a web browser.

Each user visibility is scoped to his own business domain. Thus, a merchant will get his own retail outlets, while a Bank will get all outlets involved in RCC agreements with its customers (merchants). A CIT services company gets on the map the contracted Cash Smart Safes / locations.

In case that the customer is using the GeoCash system as core infrastructure element of an Help Desk or Incidents Management Team, then high resolution wall projection is offered (QUXGA to HUXGA).

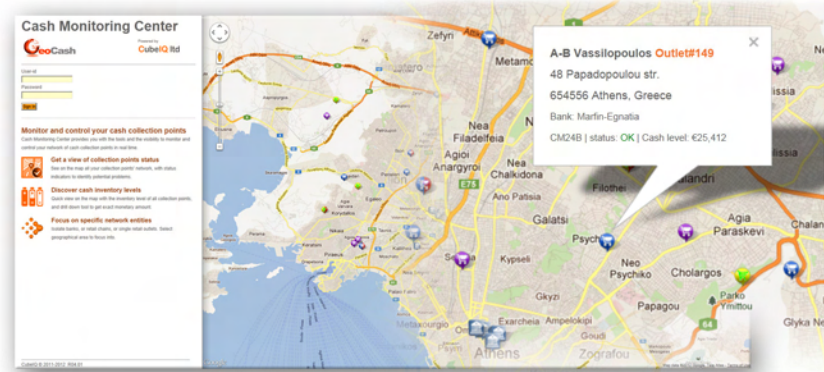
## Focus on criteria-based selected entity groups

Cash Smart Safe nodes may be selected among a large ecosystem, based on commercial or operational criteria.

Among other, those may be a specific retail chain, the smart safe operational status, the cash level, and other.

The smart safes population is easily recognized on the map by their cash level and operational status, based on the different icons used in thematic map rendering.

The map may zoom in and out, so that the user may focus on a particular territory, or even down to a specific location.



### Customize map view

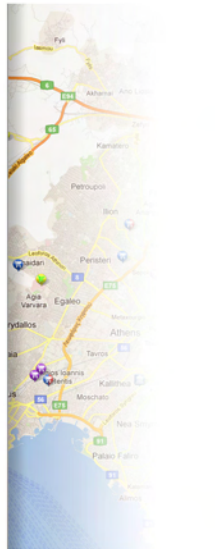
You may reduce the clutter on the map, or isolate and emphasize on a particular category, then use the below selectors to customize the entity groups displayed on the map:

Banks	Retailers	Machine Status
Alpha Bank Attica Bank Marfin-Egnatia Millennium Bank NBG Piraeus Bank	A-B Vassilopoulos Aegean BP Carrefour Jumpro Kotsovolos	Cash inventory level: <input checked="" type="checkbox"/> low <input checked="" type="checkbox"/> mid <input checked="" type="checkbox"/> high Machine working status: <input checked="" type="checkbox"/> working <input type="checkbox"/> not working
<input type="checkbox"/> select all	<input type="checkbox"/> select all	<input type="button" value="Submit"/>

### Cash Network Entities

The cash network entities are depicted on the thematic map with markers:

- Cash Monitoring Center
- Bank
- Retail w/low cash
- Retail w/high cash
- Retail w/normal cash
- Cash m/c out of order



**Browse through the cash network entities**  
The expandable table below contains all network entities, such as Banks, Retail Companies and Retail Outlets.  
Click on any row to expand in a cascade manner...

expand all  collapse all

EID	Network Entity Name & Address	SmartSafe	Status	Cash
B1	Alpha Bank 40 Stadiou Str., 10252 Athens			
B2	Attica Bank 23 Omirou Str., 10672 Athens			
B3	Marfin-Egnatia 24 Kifisias Ave., 15125 Maroussi			
R1	A-B Vassilopoulos Food Supermarkets			
L11	Outlet#147 569417 Athens	CM24B	powered-off	€12,248
L13	Outlet#303 209631 Athens	SD	OK	€9,533
L14	Outlet#149 654556 Athens	CM24B	OK	€25,412
L15	Outlet#133 722062 Athens	FD	maintenance	€26,356
L16	Outlet#22 551813 Athens	CM24B	OK	€7,029
L19	Outlet#374 796986 Athens	CM24B	OK	€33,977
L24	Outlet#260 491663 Athens	CM24B	OK	€25,620
L27	Outlet#215 263326 Athens	CM24B	OK	€1,859
R5	Jumpro Toys market			
B4	Millennium Bank 184 Syngrou Ave., 17671 Kallithea			
B5	NBG 86 Aiolou Str., 10559 Athens			
B6	Piraeus Bank 4 Amerikis Str., 10564 Athens			

## Interrogate the smart safe journal

Clicking on the specific retail outlet, the system is fetching the most recent activity data, either financial (deposits, withdrawals, cash off load by CIT), or operational (users login, shift start/end, etc).

Smart Safe Journal for L23

Time	Event	Amount (€)	Cash Inv.
2012-05-04 12:29	cash inventory chk		13,320
2012-05-04 12:33	wrong pin attempt		13,320
2012-05-04 13:09	deposit	5,220	18,540
2012-05-04 13:16	cash inventory chk		18,540
2012-05-04 18:10	deposit	6,300	24,840
2012-05-07 08:15	wrong pin attempt		24,840
2012-05-07 09:45	deposit	5,880	30,720
2012-05-07 09:56	deposit	4,760	35,480
2012-05-07 10:18	cash inventory chk		35,480
2012-05-07 11:06	cash inventory chk		35,480
2012-05-07 11:10	withdrawal	1,470	34,010
2012-05-07 12:13	cash inventory chk		34,010
2012-05-07 12:19	deposit	4,920	38,930
2012-05-07 15:37	wrong pin attempt		38,930